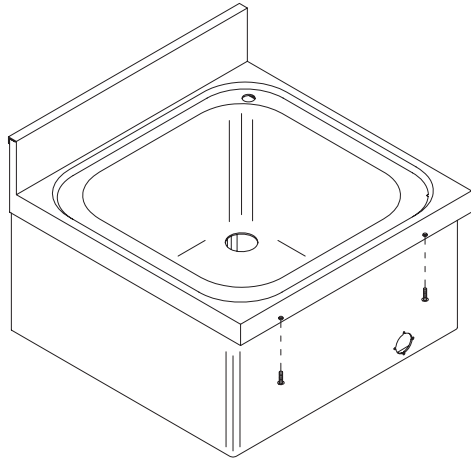


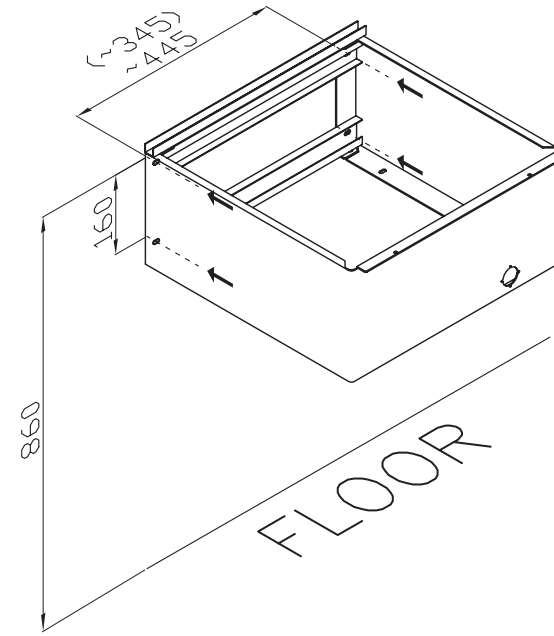
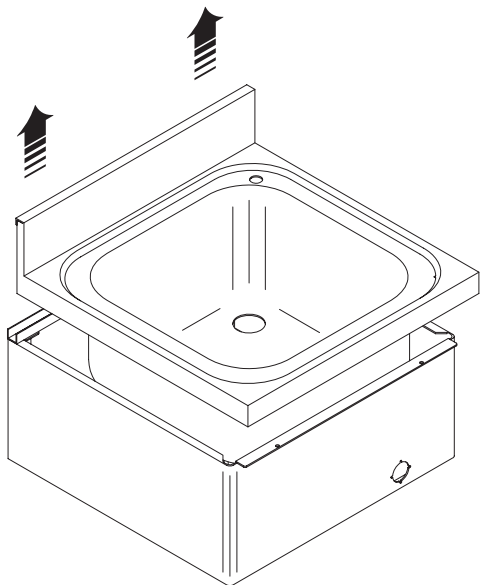
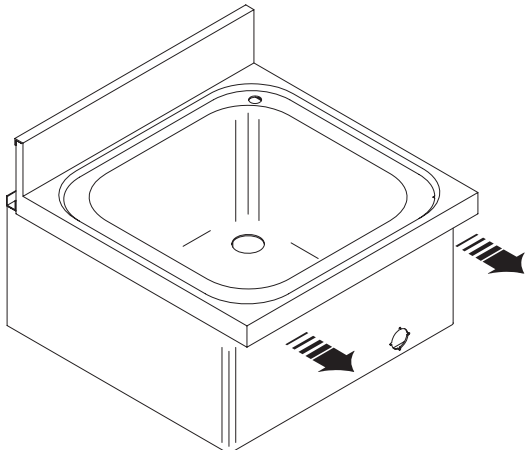
Step 1

First, dismantle the washbasin by removing the 2 screws under the front edge (as shown in the diagram).



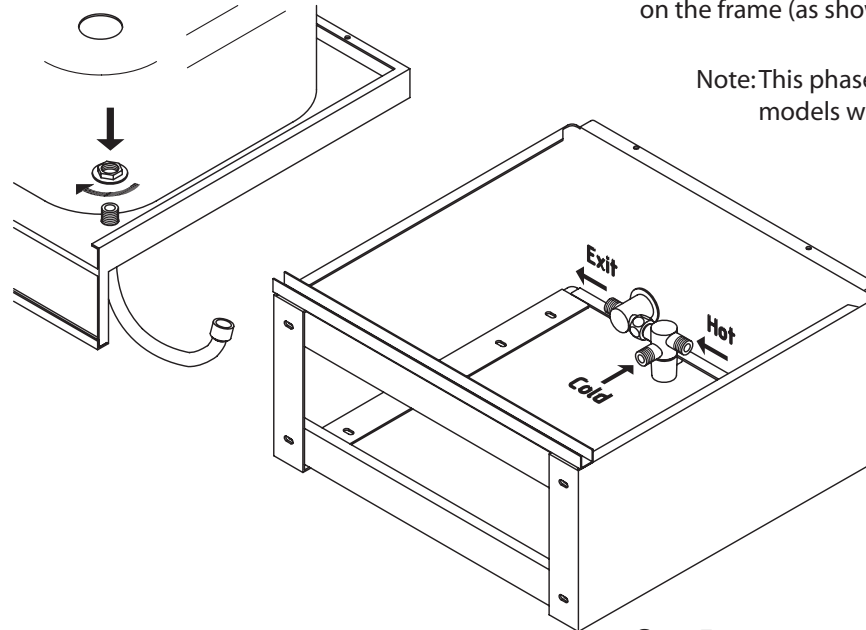
Step 2

After removing the 2 fixing screws, pull the washbasin out of the frame as shown in the two diagrams below.



Step 3

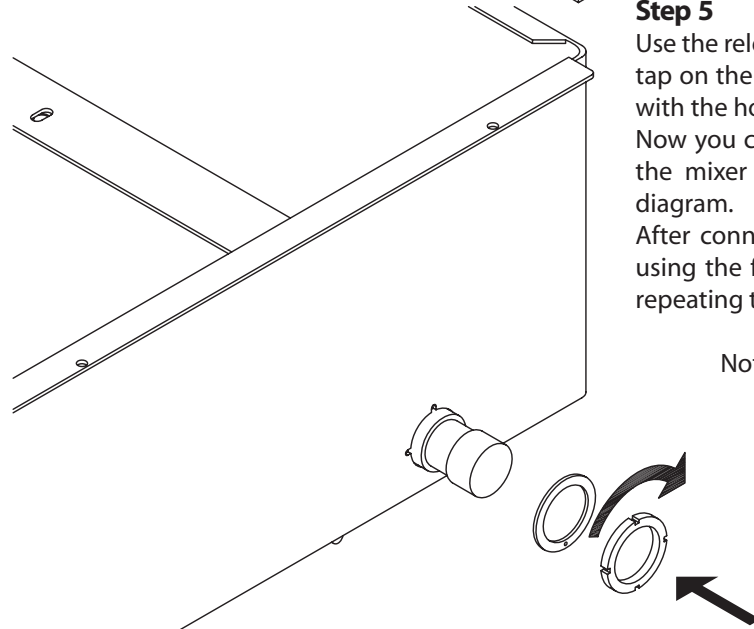
After having completely removed the washbasin, fix the frame to the wall with the screws and anchors supplied (as shown in the diagram).



Note: This phase only refers to models with taps.

Step 4

After fixing the frame to the wall, fix the spout on the washbasin and the mixer tap on the frame (as shown in the diagram).



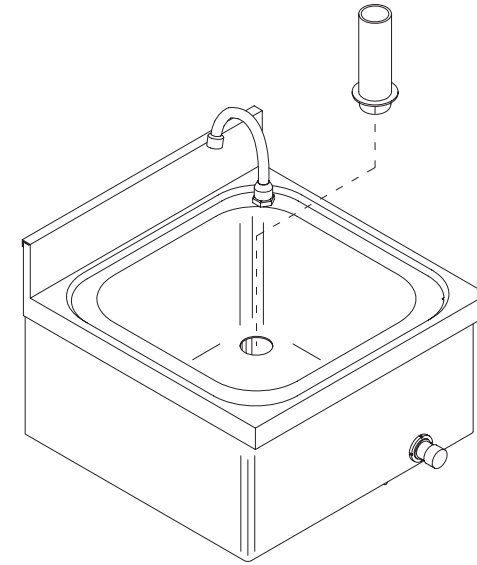
Step 5

Use the relevant washer and the grooved nut to fix the mixer tap on the frame, lining the small screw in the mixer tap up with the hole in the washer (as shown in the diagram)

Now you can make the hot and cold water connections on the mixer tap, following the instructions in the previous diagram.

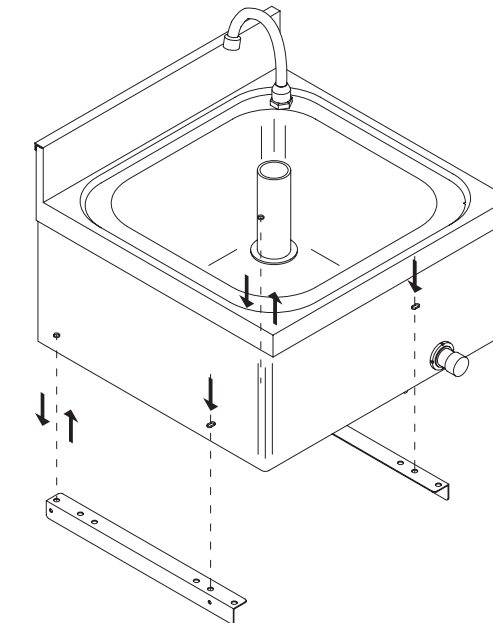
After connecting the outlet of the mixer tap to the spout using the flexible hose supplied, fit the washbasin in place repeating the operations in phase 2 in the reverse order.

Note: This phase only refers to models with taps.



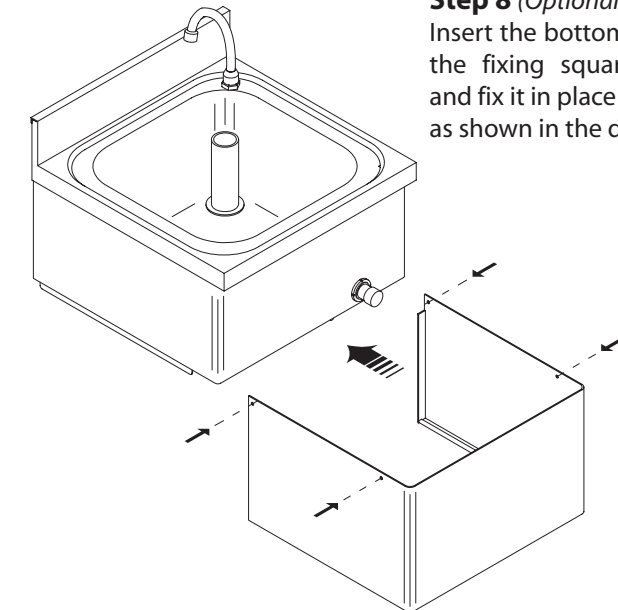
Step 6

After making all the connections, fit the "overflow" on the washbasin (except for models LM40E, LM40EM and LM40)
Lastly, position and fix the drain trap (this should be done by a plumber).



Step 7 (Optional)

Fit the fixing squares (making sure you get the right and left ones in the right position) to the band, following the instructions in the diagram. Remove and use the screw in the rear (shown by the double arrow in the diagram), to attach the fixing squares. On the front, use the screws supplied, inserting them from inside the band (from the top downwards, as shown).



Step 8 (Optional)

Insert the bottom cover on the outside of the fixing squares mounted previously and fix it in place with the screws supplied as shown in the diagram.