

REFRIGERATED FISH COUNTER



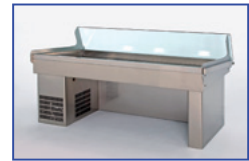
690 BP 105/210 RV	Wave structure – Straight glass – Width 1050/2100
690 GP 210 RV	With legs – Straight glass – Width 2100
690 VP 105/210 RV	Only tank – Straight glass – Width 1050/2100
690 BP 210 RC	Wave structure – Curved glass – Width 2100
690 GP 210 RC	With legs – Curved glass – Width 2100
690 VP 210 RC	Only tank – Curved glass – Width 2100



AISI 316 stainless steel tank with drainage hole, expanded polyurethane insulation with an embedded coil for refrigeration on contact, a perforated, removable false bottom, and a temperature display on the side visible to the public.

The side facing the public has straight 10 mm tempered glass or curved 6 mm tempered glass, a shockproof bar, and shaped stainless steel edges.

The tank can be positioned either on a masonry base or can be completed using two types of AISI 304 stainless steel structures. The first is curved and closed on all sides while the second has two large, supporting legs. In both cases, the refrigerating unit and technical connections are concealed inside panels that can be accessed for inspection.



FISH COUNTER DESIGNED FOR REFRIGERATION



690 BP 105/210 PV	Wave structure – Straight glass – Width 1050/2100
690 GP 210 PV	With legs – Straight glass – Width 2100
690 VP 105/210 PV	Only tank – Straight glass – Width 1050/2100
690 BP 210 PC	Wave structure – Curved glass – Width 2100
690 GP 210 PC	With legs – Curved glass – Width 2100
690 VP 210 PC	Only tank – Curved glass – Width 2100



AISI 316 stainless steel tank with drainage hole, expanded polyurethane insulation with an embedded coil for refrigeration on contact, a perforated, removable false bottom, and a temperature display on the side visible to the public.

The side facing the public has straight 10 mm tempered glass or curved 6 mm tempered glass, a shockproof bar, and shaped stainless steel edges.

The tank can be positioned either on masonry base or can be completed using two different types of AISI 304 stainless steel structures. The first is curved and closed on all sides while the second has two large, supporting legs. In both cases, the technical connections are concealed inside panels that can be accessed for inspection.



NEUTRAL FISH COUNTER



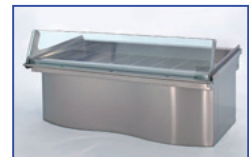
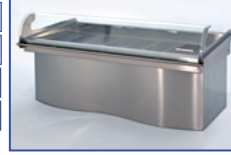
690 BP 105/210 NV	Wave structure – Straight glass – Width 1050/2100
690 GP 210 NV	With legs – Straight glass – Width 2100
690 VP 105/210 NV	Only tank – Straight glass – Width 1050/2100
690 BP 210 NC	Wave structure – Curved glass – Width 2100
690 GP 210 NC	With legs – Curved glass – Width 2100
690 VP 210 NC	Only tank – Curved glass – Width 2100



AISI 316 stainless steel tank with drainage hole, expanded polyurethane insulation and removable, perforated false bottom.

The side facing the public has straight 10 mm tempered glass or curved 6 mm tempered glass, a shockproof bar, and shaped stainless steel edges.

The tank can be positioned either on masonry base or can be completed using two different types of AISI 304 stainless steel structures. The first is curved and closed on all sides while the second has two large, supporting legs. In both cases, the technical connections are concealed inside panels that can be accessed for inspection.



MUSSEL COUNTER



690 BM 105 RV	Refrigerated – Wave structure – Width 1050
690 VM 105 RV	Refrigerated – Only tank – Width 1050
690 BM 105 PV	Predisposed – Wave structure – Width 1050
690 VM 105 PV	Predisposed – Only tank – Width 1050
690 BM 105 NV	Neutral – Wave structure – Width 1050
690 VM 105 NV	Neutral – Only tank – Width 1050



AISI 316 stainless steel tank with drainage hole, expanded polyurethane insulation with an embedded coil for refrigeration on contact (not available in the neutral version), perforated, removable false bottom, and temperature display on the side visible to the public (not available in the neutral version).

The side facing the public is protected with straight 10 mm tempered glass, a shockproof bar, and shaped, stainless steel edges.

The tank can be positioned either on masonry base or can be completed using a closed, curved AISI 304 stainless steel structure. In both cases, the refrigeration unit (refrigerated version only) and technical connections are concealed inside panels that can be accessed for inspection.



SOFTEN COUNTER



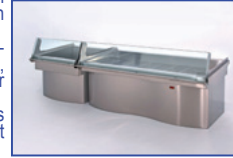
690 BA 105 NV	Wave structure – Width 1050
690 VA 105 NV	Only tank – Width 1050
692 PA 0806 G/GM	Well tank – With legs – mm. 800x650+50x800h
692 PA 0806 R/RM	Well tank – With wheels – mm. 800x650+50x780h



AISI 304 stainless steel tank with drainage hole complete with tap and fittings to apply an inlet valve. The counter is available both in a version that can be used in conjunction with fish counters and in a well basin version.

The version that can be combined with fish counters has a straight 10 mm protective glass cover, a shockproof bar, and shaped, stainless steel edges and can be positioned on masonry base or completed with a curved, closed structure.

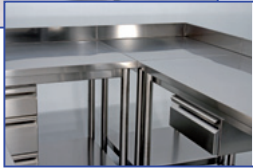
The well basin version is fitted with either small, fixed legs or wheels with a diameter of 100 mm and can be fitted with supports to mount an inlet valve ("GM" and "RM" versions).



CASH COUNTER AND CORNERS



694 BC 070 NN	Cash-counter – Wave structure – mm. 700x 1050depth x805h
696 BA 045 NN	45° corner connection – Wave structure – mm. 1050depth x805h
696 BA 090 NN	90° corner connection – Wave structure – mm. 1050depth x805h



These neutral elements in AISI 304 stainless steel for linear - 45° or 90° - corner connections can be used in conjunction with fish and mussel counters to create a cash area, as a display for complementary products (wines, spices, preserved products) or simply as a service counter.

Closed, curved stainless steel counter without protection at the front.

The cash counter is provided complete with a stainless steel drawer underneath it and an underlying area with a hinged door and middle shelf.



ACCESSORIES FOR COUNTERS



VM 105/210 BL	Washing bar for counter 1050/2100
VM 054 I/P P	Shelf for weighing scales – S.Steel/polyethylene shelf – mm. 500x400
VM 054 I/P R	Shelf for weighing scales+roll bag – S.Steel/pol. shelf – mm. 500x400
VM 054 I/P C	Shelf for weighing scales+sheet bag – S.Steel/pol. shelf – mm. 500x400



Useful accessories, such as stainless steel bars with holes to wash tanks automatically using hot water, service and weighing scale counters in either polyethylene or stainless steel are available to make the fish counters even more functional.

Weighing scale counters can be fitted with a bag dispenser for either rolls or individual sheets.



TABLES AND SINKS FOR FISH PROCESSING



LP 100/120 D/S	Selection sink mm. 1000/1200x600x900h
207 12/14 D/S	Selection sink mm. 1200/1400x700x900h
LP 150	Marina workstation mm. 1400+1400x600x900h
LP 120	Selection tank mm. 1200x700x900h



A wide range of specific selection sinks, a large tank and a unique workstation have all been designed in AISI 304 stainless steel and are perfect for work areas used to clean and prepare fish.

These items are completed by an ample collection of highly useful accessories such as dustbins, chopping boards, knife holders and taps.

