

CENTRAL TABLES



80 G C0 ---	Without top – with legs – mm. LxDx860h
80 G C1 ---	With stainless steel top – with legs – mm. LxDx910h
80 G C2 ---	With granite top – with legs – mm. LxDx900h
80 Z C0 ---	Without top – with wainscot – mm. LxDx860h
80 Z C1 ---	With stainless steel top – with wainscot – mm. LxDx910h
80 Z C2 ---	With granite top – with wainscot – mm. LxDx900h



Designed in AISI 304 scotch-brite satin stainless steel, they can be equipped in an infinite array of different combinations. The table with a 900 mm depth can be equipped on either one or two sides, while smaller tables can be equipped on one side and larger ones on two sides.

The upper stainless steel worktop has a 50 mm edge with a wide curve on two workings sides. It is 1.5 mm thick and has been reinforced with drip-proof stainless steel sections and a double wood panel glued in a specific manner to ensure heat resistance. It can be replaced with a granite counter with a stainless steel supporting panel beneath it.

Our basic elements for standard furnishings are fitted with adjustable legs that can be replaced with a stainless steel wainscot.



CENTRAL TABLES WITH BRIDGES FOR CABINETS



80 G C3 ---	With stainless steel top – with legs – mm. LxDx910-2430h
80 Z C3 ---	With stainless steel top – with wainscot – mm. LxDx910-2430h



Designed in AISI 304 scotch-brite satin stainless steel, they can be equipped in an infinite array of different combinations. The table with a 900 mm depth can be equipped on either one or two sides, while smaller tables can be equipped on one side and larger ones on two sides.

A sturdy, stainless steel, bridge with 4 columns supports the cabinets, which can be positioned on either one or two fronts. No further fastening devices are required. These items can be used in conjunction with our stainless steel hanging cupboards.

The upper stainless steel worktop has a 50 mm edge with a wide curve on two workings sides. It is 1.5 mm thick and has been reinforced with drip-proof stainless steel sections and a double wood panel glued in a specific manner to ensure heat resistance. It can be replaced with a granite counter with a stainless steel supporting panel beneath it.

Our basic elements for standard furnishings are fitted with adjustable legs that can be replaced with a stainless steel wainscot.



WALL TABLES



80 G P0 ---	Without top – with legs – mm. LxDx860h
80 G P1 ---	With stainless steel – with legs – mm. LxDx910h
80 G P2 ---	With granite top – with legs – mm. LxDx900h
80 Z P0 ---	Without top – with wainscot – mm. LxDx860h
80 Z P1 ---	With stainless steel top – with wainscot – mm. LxDx910h
80 Z P2 ---	With granite top – with wainscot – con zoccolo – mm. LxDx900h



Designed in AISI 304 scotch-brite satin stainless steel, they can be equipped in an infinite array of different combinations.

The upper stainless steel worktop has a splash-back and a 50 mm edge with a wide curve. It is 1.5 mm thick and has been reinforced with drip-proof stainless steel sections and a double wood panel glued in a specific manner to ensure heat resistance. It can be replaced with a granite counter with a stainless steel supporting panel beneath it.

Our basic elements for standard furnishings are fitted with adjustable legs that can be replaced with a stainless steel wainscot.



TABLES WITH MOVABLE ELEMENTS



80 MC0 ---	Central – without top – mm. LxDx860h
80 MC1 ---	Central – with stainless steel top – mm. LxDx910h
80 MP0 ---	At wall – without top – mm. LxDx860h
80 MP1 ---	At wall – with stainless steel top – mm. LxDx910h



In order to streamline cleaning operations and ensure that the workstation can be changed, our "MAGNUM" tables in AISI 304 scotch-brite satin stainless steel have been designed with a stainless steel supporting frame and worktop, a 50 mm, 1.5 mm thick stainless steel edge with an ample curve on both work sides, reinforced with drip-proof stainless steel sections and a double wood panel glued in a specific manner to ensure heat resistance. The worktop has a splash-back in the wall version.

All mobile elements underneath have wheels with brakes at the front and boast a stainless steel top that can be used as a worktop. All mobile elements are available in the same versions as fixed elements: that is, they can be open, with sliding or hinged doors, have chests of drawers, drawers with a door underneath, tray holders or flour hoppers.



WORK BASE AND STORAGE BASE

83 4 --	Open compartment – mm. LxDx700+160h
83 5 --	With sliding doors – mm. LxDx700+160h
83 1 --	With couple of shutting doors – mm. LxDx700+160h
83 1 40/50 --	With single shutting door – mm. 400/500xDx700+160h



These neutral bases can be used to create equipped tables in AISI 304 scotch-brite satin stainless steel. All of the models are provided with a reinforced, adjustable middle shelf. Furthermore, the standard version has adjustable legs that can be replaced with stainless steel wainscoting. The doors can be either sliding doors on guides with ball bearings or hinged with internal adjustable hinges.



BASE WITH DRAWERS

82 3 --	With 3 drawers – mm. LxDx700+160h
82 4 --	With 4 drawers – mm. LxDx700+160h
82 5 --	With 1 drawer + soaked pastry container – mm LxDx700+160h
82 1 --	With 1+2+1 drawers – mm. LxDx700+160h
83 3 40/50 --	With 1 drawer + 1 door – mm. 400/500xDx700+160h
83 3 80/10 --	With 2 drawers + 2 doors – mm. 800/1000xDx700+160h

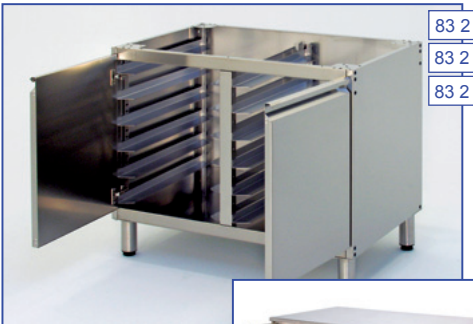


These neutral bases can be used to create equipped tables in AISI 304 scotch-brite satin stainless steel. The drawers have stainless steel guides with bearings, while the soaked container model has an internal support to hold the containers. It has hinged doors with adjustable internal hinges. In the standard version, all of the models are provided with adjustable legs that can be replaced with stainless steel wainscoting.

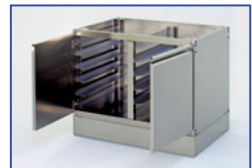
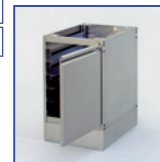


BASE WITH TRAY HOLDER

83 2 50 --	6 runners – 1 door - mm. 500xDx700+160h
83 2 70 --	6 runners – 2 doors - mm. 700xDx700+160h
83 2 10 --	6 + 6 runners – 2 doors – mm. 1000xDx700+160h



These neutral bases can be used to create equipped tables in AISI 304 scotch-brite satin stainless steel. The base is equipped with 6 double guides for pastry and bakery trays. The 1000 mm wide model has double internal guides. In the standard version, all of the models are provided with adjustable legs that can be replaced with stainless steel wainscoting.



HOPPER BEAMS

84 4 50 --	1 place – mm. 500xDx100h
84 4 10 --	2 place – mm. 1000xDx100h
84 4 15 --	3 place – mm. 1500xDx100h
84 4 20 --	4 place – mm. 2000xDx100h
87 1 10 --	Bearing side piece – mm. 100xDx700+160h



Designed in AISI 304 scotch-brite satin stainless steel, they are used to connect normal bases or the supporting side and create free spaces, which are usually employed to house wheeled hoppers. In this case, the beams should be opportunely completed with double stainless steel guides to slide the hoppers while keeping them in the right position.



HOPPERS

84 1 50 --	With panels - mm. 500xDx850h
84 2 50 --	With panels + central divider - mm. 500xDx850h
84 3 50 --	Lid for hopper with panels - mm. 500xDx2h
T 40 IP	Rounded off edges - mm. 385x565x750h
T 41 IP	Rounded off edges + central divider - mm. 385x565x750h



Designed in AISI 304 scotch-brite satin stainless steel, they are perfect when inserted inside equipped tables and are available in a "panel" version and a version with rounded-off edges. The "panel" version has straight edges on the inside and a front panel with an upper handle in the same section of the doors and drawers. Two of the wheels are fitted with brakes. The hopper can be completed with a top lid. The version with rounded-off edges is completely smooth inside and is liquid-tight. It is particularly recommended to store sugar and other fine powdered products. The hopper comes complete with a top lid.



MOBILE ELEMENTS

80 ME G --	Open compartment - mm. LxDx750h
80 ME B --	Shutting doors - mm. LxDx750h
80 ME S --	Sliding doors - mm. LxDx750h
3C -- I75	Chest of drawers - mm. 405xDx750h
T 40 IP	Hopper - mm. 385x565x750h
T 41 IP	Hopper + central divider - mm. 385x565x750h



These wheeled elements in AISI 304 scotch-brite satin stainless steel can be used in conjunction with the relative tables or as a finished product. Our open elements with an adjustable middle shelf, hinged doors, sliding doors and 3 drawers are equipped with a top lid and brakes on the front wheels. The hopper has rounded-off edges and is completely smooth inside. It is supplied with a top lid and can be supplied either with or without a divider in the centre.



BRIDGES FOR CABINETS

84 P1 L --	1 side - mm. Lx400x2430h
84 P2 L --	2 sides - mm. Lx840x2430h



This is a key element to complete equipped tables. It has been designed in AISI 304 scotch-brite satin stainless steel as a sturdy bridge with 4 columns that can be used to support a wide array of hanging cupboards. No further fastening devices are required and either one or both fronts can be equipped. In this case, the back part of the cabinet is covered with a smooth, open stainless steel panel.



HANGING CUPBOARDS

PL --	Doors + smooth shelves - mm. Lx400x600h
PN --	Open compartment + smooth shelves - mm. Lx400x600h
PF --	Doors + perforated shelves - mm. Lx400x600h
PX --	Open compartment + perforated shelves - mm. Lx400x600h
PB 1 --	1 compartment for soaked pastry containers - mm. Lx400x600h
PB 2	1 open compart. + 1 compart. for soaked pastry containers - mm. Lx400x600h



This complete range of steel hanging cupboards in AISI 304 scotch-brite satin stainless steel can be used either in conjunction with the relative bridges or as finished products. The cupboards are available either open, or with hinged or sliding doors as well as with an adjustable middle shelf. They can be also purchased an empty space inside so that soaked containers can be inserted inside them. The base and middle shelves can be either smooth or perforated. In the latter case, a stainless steel plate rack can be requested as an accessory.

SOAKED CONTAINERS AND SMALL DRAWERS



84 PB 25 L	25 Lt. soaked pastry containers – mm. 177x375x500h
84 GP ---	Runners set for hanging cupboard little drawers – mm. Lx300x25h
84 GT ---	Runners set for 1 side beam little drawers – mm. Lx296x75h
84 S 9428	Little drawer with single handle – mm. 177x335x150h
84 D 9428	Little drawer with double handle – mm. 177x345x150h



Our soaked containers are used in very busy pastry making workshops. They are fitted with a glass level sensor, a steam cock and a top lid. They have a capacity of approximately 25 litres. A set of guides can be fitted under the hanging cupboards, which can be used to house a certain number of small drawers. These are comprised of a 1/3 gastronorm container with a handle on either one or two sides. All of these accessories are designed in AISI 304 scotch-brite satin stainless steel.



TROLLEYS AND RACKS



84 C 20 TP	20 compartment trolley with arms – mm. 450x450x1960h
84 R 10 TP	10 compartment rack with arms – mm. 450x450x910h
84 R 20 TP	20 compartment rack with arms – mm. 450x450x1810h
84 C 10 AP	10 compartment trolley with runners – mm. 470x660x1220h
84 C 15 AP	15 compartment trolley with runners – mm. 470x660x1730h
84 C 20 AP	20 compartment trolley with runners – mm. 470x660x2180h



Range of 400x600 mm wheeled and wall-mounted bakery and pastry trays, entirely designed in AISI 304 scotch-brite satin stainless steel. The trolleys and racks with arms are provided without assembly, while the trolleys with guides are instead designed as a welded mono-bloc unit and the guides have a lowered slot to house trays during handling.



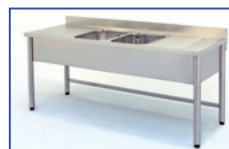
SINKS



36 - ---	9	With doors – mm. Lx600x900h
30 - ---	9	With doors – mm. Lx700x900h
26 - ---	9	With lower shelf – mm. Lx600x900h
20 - ---	9	With lower shelf – mm. Lx700x900h
16 - ---	9	On legs – mm. Lx600x900h
10 - ---	9	On legs – mm. Lx700x900h



Three basic types: closed with either hinged or sliding doors, open with a lower shelf, or with legs and various different types of tops: with 1 basin, with 1 washbasin, with 2 basins, with a basin and a drain either on the left or right, with 2 basins and a drain either on the left or right (even with a rise to house a dishwasher) and with 2 basins and 2 drains. All designed in AISI 304 scotch-brite satin stainless steel and provided complete with a set of accessories containing a plastic drain, a drain-trap, and a stainless steel overflow pipe.



CUPBOARDS



AL ---	Sliding doors – mm. Lx500/700x1700h
BL ---	Sliding doors – mm. Lx500/700x2000h
ABML ---	Shutting doors – mm. LxDx2000h
ATM ---	Shutting doors – mm. LxDx1900h
SP ---	Changing room – mm. LxDx1800h
API/AT/AV ---	Multipurpose – mm. Lx500x2150h



Cupboards with both sliding and hinged doors designed in a variety of versions and variations, all of which in satin AISI 304 scotch-brite stainless steel. They can be used in a selection of different places. These cupboards can be employed to store dishes and supplies, with sliding doors, clear glass or full panels. In this case, the inner shelves are available smooth, as well as drilled or glass. Changing room lockers can also be customised with internal dividers for each section and a sloping roof. The multipurpose cupboard with either one or two doors can be fitted with shelves, broom holders or a clothes rail. All cupboards are provided with legs and adjustable feet.

